

TOWN SQUARE® FloWise™ CONCEALED TRAPWAY RIGHT HEIGHT™ ELONGATED TOILET

2817 128

- Vitreous china
- **LXP (Luxury Performance) Toilet**
- Meets definition for HET (High Efficiency Toilet)
1.07 gpf/4.8 Lpf
- Meets EPA WaterSenseSM criteria (Pending)
- Contributes to a LEED solution
- Elongated siphon action bowl with smooth-sided, concealed trapway
- PowerWash™ rim scrubs bowl with each flush
- 419mm (16-1/2") rim height for accessible applications
- Fully glazed 2" (51mm) trapway
- Oversized 3" (76mm) Flush Valve with Chemical Resistant Flapper
- American classic traditional styling on bowl and tank
- Front-mounted chrome trip lever design-matched to Town Square® faucets
- 2 colour-matched bolt hole covers
- Includes design-matched Duroplast Slow Close Toilet Seat and cover with easy lift-off feature for simple removal and reattachment for cleaning
- 100% factory flush tested
- **Coordinates with Town Square® Suite of fixtures and faucets**

Separate Component Parts:

- 3071 128 Bowl
- 4216 128 Unlined Tank

Nominal Dimensions:

756 x 390 x 791 mm
(29-3/4" x 15-1/4" x 31-1/8")

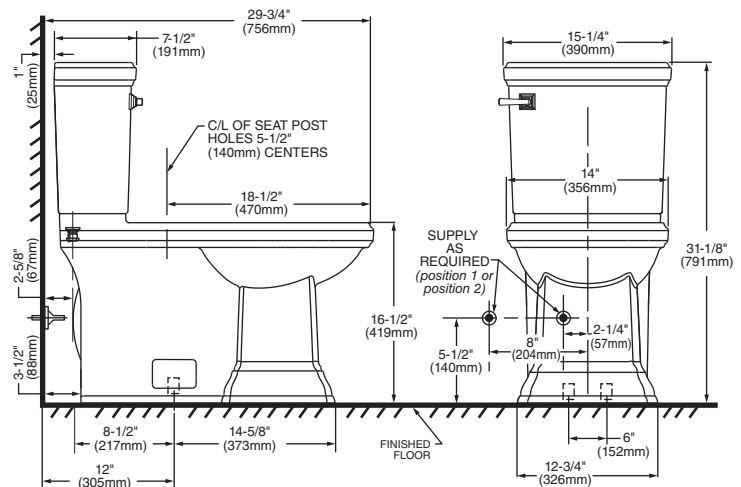
Fixture only, supply by others

Compliance Certifications - Meets or Exceeds the Following Specifications:

- ASME A112.19.2-2008/CSA B45.1-08

To Be Specified

- Colour: White Bone Linen
- Supply with stop:



IMPORTANT: Water supply on the wall is required at 2-1/4" (57mm) or 8" (204mm) from centreline of the toilet (see rough-in). First suggested position is hidden behind the toilet. The geometry of the toilet gives space for this installation. The second suggested position is next to the toilet. Between these two positions, the space for the supply between wall and toilet is limited to 3-1/2" (88mm). In this case, check your supply and hose dimensions.

NOTES:

THIS TOILET IS DESIGNED TO ROUGH-IN AT A MINIMUM DIMENSION OF 305MM (12") FROM FINISHED WALL TO C/L OF OUTLET.

SUPPLY NOT INCLUDED WITH FIXTURE AND MUST BE ORDERED SEPARATELY.

* DIMENSION SHOWN FOR LOCATION OF SUPPLY IS SUGGESTED.

IMPORTANT: Dimensions of fixtures are nominal and may vary within the range of tolerance established by ANSI Standard A112.19.2

These measurements are subject to change or cancellation. No responsibility is assumed for use of superseded or voided pages.



- When installed so top of seat is 432 to 483mm (17" to 19") from the finished floor.

MEETS THE AMERICAN DISABILITIES ACT GUIDELINES AND ANSI A117.1 REQUIREMENTS FOR ACCESSIBLE AND USEABLE BUILDING FACILITIES-CHECK LOCAL CODES.

